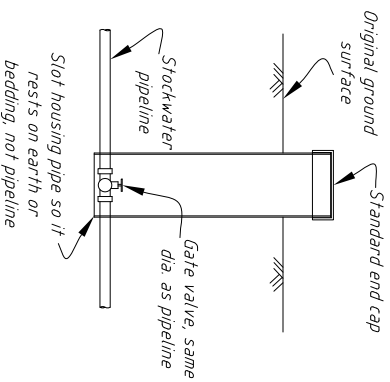
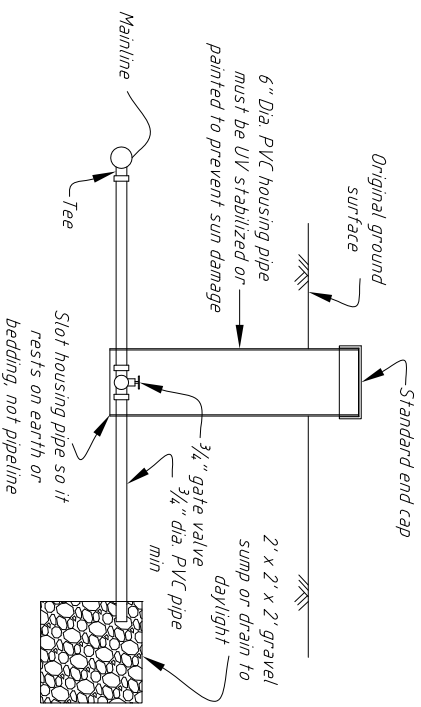


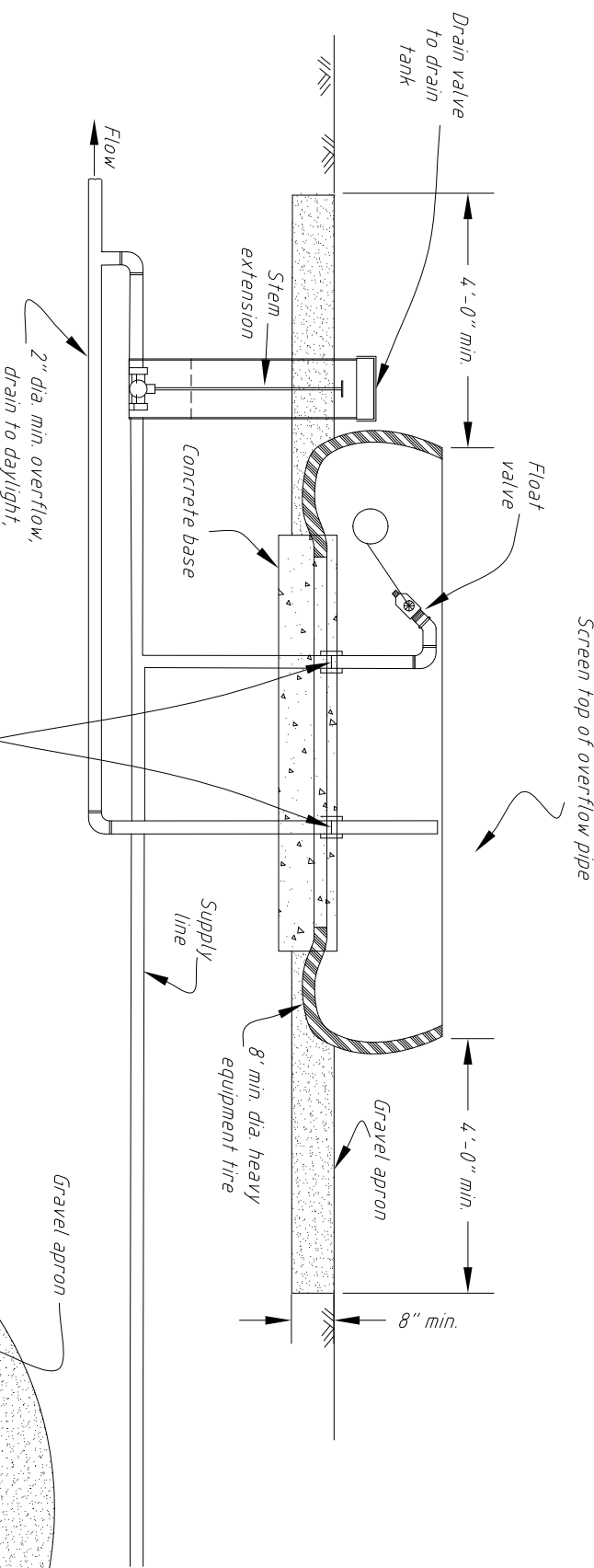
# STOCKWATER



**GATE VALVE DETAIL**

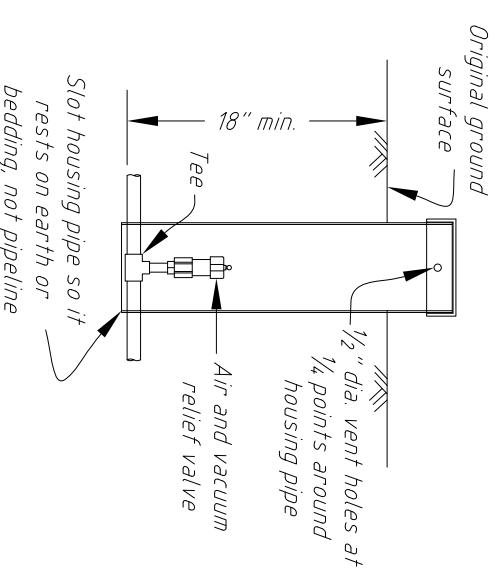
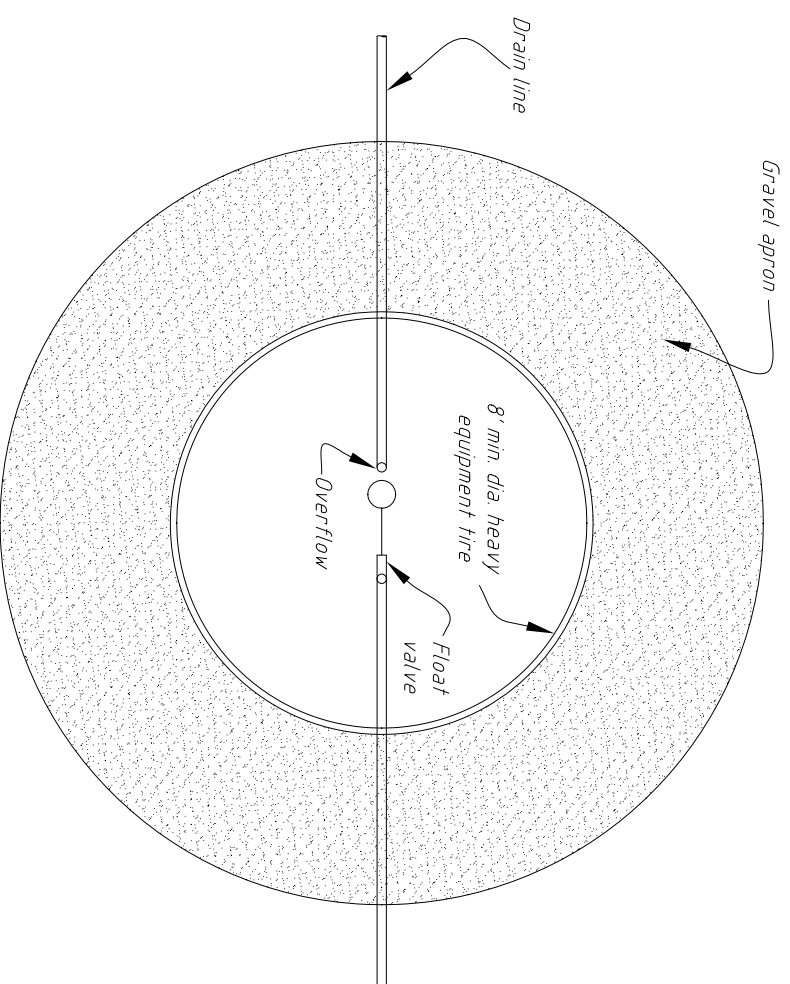


**PIPELINE DRAIN DETAIL**



**SECTIONAL ELEVATION**

- NOTES:**
1. Supply pipeline shall be buried a minimum of 4 feet deep for winter use and 18" deep for summer use.
  2. Drain pipe shall be 1.5" minimum diameter.
  3. Minimum tire size is 8 ft. dia. x 2 ft. deep.
  4. Earth below tank shall be hand compacted.
  5. Tank must be fitted with an approved wildlife escape ramp.
  6. Tank should be protected with some type of guard rail system (see detail) to prevent livestock/wildlife entry.
  7. Drain pipe shall be protected from rodent entry/damage if draining to daylight.



**AIR AND VACUUM RELIEF VALVE DETAIL**